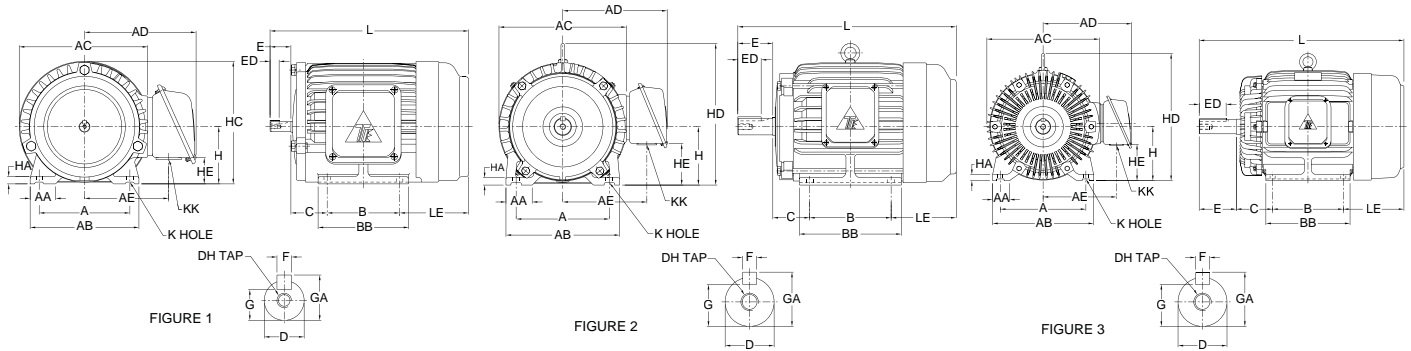


Motor type AEEB

Foot Mounting B3 (IM 1001) - Dimensions



Output (HP)				Frame Size	Fig. No.	Fixing							Shaft				
2P	4P	6P	8P			A	AB	B	BB	C	H	K	D	E	F	G	GA
0.25	0.25	-	-	63	1	100	120	80	100	40	63	7	11j6	23	-	10	-
0.5 / 0.75	0.5	0.25	-	71	1	112	140	90	115	45	71	7	14j6	30	5	11	16
1 / 1.5	0.75 / 1	0.5 / 0.75	0.25	80	1	125	155	100	130	50	80	10	19j6	40	6	15.5	21.5
2	1.5	1	0.5	90S	1	140	170	100	130	56	90	10	24j6	50	8	20	27
3	2	1.5	0.75	90L	1	140	170	125	150	56	90	10	24j6	50	8	20	27
4	3 / 4	2	1 / 1.5	100L	2	160	195	140	175	63	100	12	28j6	60	8	24	31
5 / 5.5	5 / 5.5	3	2	112M	2	190	224	140	175	70	112	12	28j6	60	8	24	31
7.5 / 10	7.5	4	3	132S	2	216	250	140	175	89	132	12	38k6	80	10	33	41
-	10	5 / 5.5 / 7.5	4	132M	2	216	250	178	212	89	132	12	38k6	80	10	33	41
15 / 20	15	10	5 / 5.5 / 7.5	160M	3	254	300	210	250	108	160	14.5	42k6	110	12	37	45
25	20	15	10	160L	3	254	300	254	300	108	160	14.5	42k6	110	12	37	45
-	25	-	-	180MC	3	279	355	241	297	121	180	14.5	48k6	110	14	42.5	51.5
-	30	20	15	180LC	3	279	355	279	335	121	180	14.5	48k6	110	14	42.5	51.5

Frame Size	General													Bearings	
	AA	AC	AD	AE	DH	ED	HA	HC	HD	HE	KK	L	LE	DE	NDE
63	28	144	122	93	M4X8	10	8	135	-	28	20	219	76	6201ZZ	6201ZZ
71	35.5	162	132	103	M5X10	14	8	152	-	53	20	250.5	85.5	6202ZZ	6202ZZ
80	35.5	177	157	122	M6X12	25	9	168	-	55	20	282.5	92.5	6204ZZ	6204ZZ
90S	35.5	200	170	135	M8X16	32	10	190	-	65	20	307.5	101.5	6205ZZ	6205ZZ
90L	35.5	200	170	135	M8X16	32	10	190	-	65	20	332.5	101.5	6205ZZ	6205ZZ
100L	45	219	180	145	M10X20	40	12.5	-	243	70	28	374.5	111.5	6206ZZ	6305ZZ
112M	45	238	189	154	M10X20	40	14	-	265	82	28	391.5	121.5	6306ZZ	6306ZZ
132S	45	273	225	180	M12X24	64	16	-	310	83	35	454	145	6308ZZ	6306ZZ
132M	45	273	225	180	M12X24	64	16	-	310	83	35	492	145	6308ZZ	6306ZZ
160M	50	334	263	218	M16X32	80	18	-	377	108	35	608	180	6309ZZ	6307ZZ
160L	50	334	263	218	M16X32	80	18	-	377	108	35	652	180	6309ZZ	6307ZZ
180MC	75	382	305	250	M16X32	80	20	-	421	119	35	672	200	6311ZZ	6310ZZ
180LC	75	382	305	250	M16X32	80	20	-	421	119	35	710	200	6311ZZ	6310ZZ

- Note :**
- All dimensions are in mm.
 - Tolerance of shaft centre height H : +0 , -0.5 for frame size 250 and smaller
+0 , -1.0 for frame size 280 and larger
 - Data are subject to revisions without notice.

Motor type AEEB

Foot Mounting B3 (IM 1001) - Dimensions

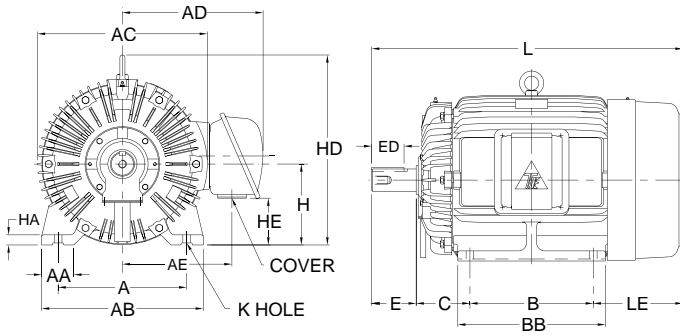


FIGURE 4

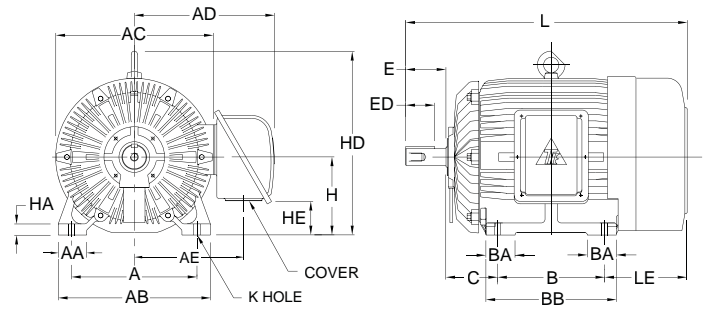


FIGURE 5

Output (HP)				Frame Size	Fig. No.	Fixing							Shaft				
2P	4P	6P	8P			A	AB	B	BB	C	H	K	D	E	F	G	GA
30	-	-	-	180MA	4	279	355	241	297	121	180	14.5	48k6	110	14	42.5	51.5
40 / 50	-	-	-	200LA	4	318	400	305	365	133	200	18.5	55m6	110	16	49	59
-	40	25 / 30	20	200LC	4	318	400	305	365	133	200	18.5	55m6	110	16	49	59
-	50	-	25	225SC	4	356	450	286	350	149	225	18.5	60m6	140	18	53	64
60	-	-	-	225MA	4	356	450	311	375	149	225	18.5	55m6	110	16	49	59
-	60	40	30	225MC	4	356	450	311	375	149	225	18.5	60m6	140	18	53	64
*75	-	-	-	250SA	4	406	500	311	385	168	250	24	60m6	140	18	53	64
-	75	50	40	250SC	4	406	500	311	385	168	250	24	70m6	140	20	62.5	74.5
*100	-	-	-	250MA	4	406	500	349	425	168	250	24	60m6	140	18	53	64
-	100	60	50	250MC	4	406	500	349	425	168	250	24	70m6	140	20	62.5	74.5
*125	-	-	-	280SA	5	457	560	368	445	190	280	24	65m6	140	18	58	69
-	125	75	60	280SC	5	457	560	368	445	190	280	24	80m6	170	22	71	85
*150	-	-	-	280MA	5	457	560	419	495	190	280	24	65m6	140	18	58	69
-	150	100	75	280MC	5	457	560	419	495	190	280	24	80m6	170	22	71	85
*175	-	-	-	315SA	5	508	615	406	490	216	315	28	65m6	140	18	58	69
-	175	125	100	315SC	5	508	615	406	490	216	315	28	85m6	170	22	76	90
*200 / 250	-	-	-	315MA	5	508	615	457	540	216	315	28	65m6	140	18	58	69
-	200	150 / 175	125	315MC	5	508	615	457	540	216	315	28	85m6	170	22	76	90
-	*250	-	-	315MB	5	508	615	457	540	216	315	28	85m6	170	22	76	90

Frame Size	General													Bearings	
	AA	AC	AD	AE	BA	DH	ED	HA	HD	HE	KK	L	LE	Drive End	NDE
180MA	75	382	305	250	-	M16X32	80	20	421	119	35	672	200	6211C3	6211C3
200LA	80	420	374	287	-	M20X40	80	25	469	115	-	770	222	6312C3	6212C3
200LC	80	420	374	287	-	M20X40	80	25	469	115	-	770	222	6312	6212
225SC	90	458	427	326	-	M20X40	110	30	524	84	-	816	241	6313	6213
225MA	90	458	427	326	-	M20X40	80	30	524	84	-	811	241	6312C3	6212C3
225MC	90	458	427	326	-	M20X40	110	30	524	84	-	841	241	6313	6213
250SA	100	510	493	378	-	M20X40	110	36	575	74	-	882.5	263.5	6313C3	6213C3
250SC	100	510	493	378	-	M20X40	110	36	575	74	-	882.5	263.5	6316 (NU216)	6213
250MA	100	510	493	378	-	M20X40	110	36	575	74	-	920.5	263.5	6313C3	6213C3
250MC	100	510	493	378	-	M20X40	110	36	575	74	-	920.5	263.5	6316 (NU216)	6213
280SA	110	577	520	405	110	M20X40	110	36	660	106	-	992	294	6314C3	6314C3
280SC	110	577	520	405	110	M20X40	140	36	660	106	-	1022	294	6318 (NU318)	6316
280MA	110	577	520	405	110	M20X40	110	36	660	106	-	1042	293	6314C3	6314C3
280MC	110	577	520	405	110	M20X40	140	36	660	106	-	1072	293	6318 (NU318)	6316
315SA	115	637	545	430	115	M20X40	110	40	743	136	-	1086	324	6314C3	6314C3
315SC	115	637	545	430	115	M20X40	140	40	743	136	-	1116	324	6320 (NU320)	6316
315MA	115	637	545	430	115	M20X40	110	40	743	136	-	1137	324	6314C3	6314C3
315MC	115	637	545	430	115	M20X40	140	40	743	136	-	1167	324	6320 (NU320)	6316
315MB	115	637	545	430	115	M20X40	140	40	743	136	-	1167	324	6320 (NU320)	6316

Note :

- Output (HP) with mark * is for direct coupling drive only.
- Roller bearings in brackets () are for 6 Pole and 8 Pole motors. For frame sizes 250 through 315, NU series roller bearings can be fitted to the drive end of the 4 Pole motors when higher radial loads are encountered , such as belt drive applications.
- Data are subject to revisions without notice.